



Where Materials Flow by Design

Lean Material Flow Solutions

ProFlow Series

Warehouse / DC Carts

1350 Rockefeller Rd., Wickliffe, OH 44092, PH 440.943.4111, info@KtecInc.com, www.KtecInc.com

STOCK MOVER MODELS

K-Tec ProFlow™ Series stock mover carts deliver flexibility, top quality and low maintenance. Standard features include:

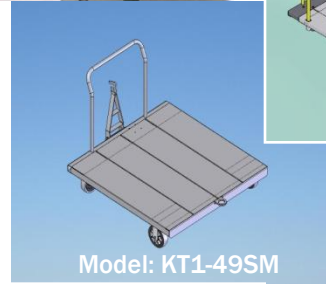
- Formed and Welded Steel Multi-Panel Frame
- 1,200 lb. Rated Deck Loads
- Light Tare Weights, Ultra-Quiet Operation
- Choice of 2 standard Deck Sizes
- Low Push/Pull Force 4 Wheel Systems
- HD Floor Look
- Choice of Coupling Systems



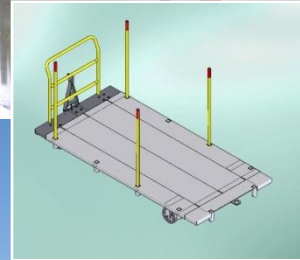
Model: KT1-96SM Stock Mover

INDUSTRY LEADING DESIGN

Carts meet standard ergonomic limits for manual push/pull forces with heavy payloads and standup to tough loading conditions. FEA (finite element analysis) puts stiffness and weight where needed to produce carts as light and rugged as possible. "Attention to detail" features help meet rigorous K-Tec safety, reliability and durability standards. K-Tec ProFlow™ carts carry a two (2) year limited warranty.



Model: KT1-49SM



LEAN and GREEN

Our carts extend the safe limits of human power to move loads manually. Tugging trains of heavy boxes and pallets consumes less energy than moving by conventional methods. This translates into reduced handling costs and lower overall emissions along the way. Low maintenance designs provide for low total life cycle costs. K-Tec's standard ProFlow™ Series of carts with ergo-support products such as lifts and conveyors provide higher capacity and an integrated material flow solution. A "try before you buy" **demo program** for qualified customers delivers a hands on look at specific approaches without wasting investment dollars.

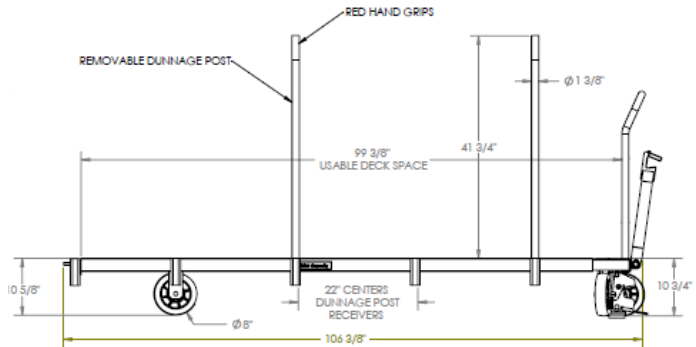
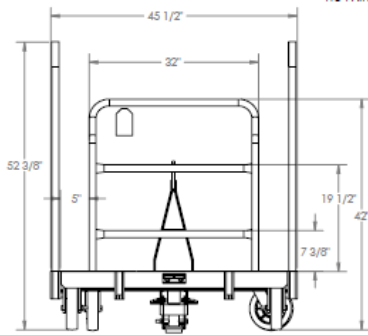


Posi-Stow™ Hook Style Towbar

Distributed By:

ProFlow™ Series Warehouse / DC Carts

1350 Rockefeller Rd., Wickliffe, OH 44092, PH 440.943.4111, info@KtecInc.com, www.KtecInc.com



Model: KT1-96SM Stock Mover

Warehouse / DC Carts

Model: KT1-96SM

Model: KT1-72SM

Model: KT1-49SM

Model: KT1-37SM

Warehouse / DC Carts	Model: KT1-96SM	Model: KT1-72SM	Model: KT1-49SM	Model: KT1-37SM
Standard Features				
Welded Steel, Industrial-Duty Multi-Panel Deck Frame w/o Paint Finish	✓	✓	✓	✓
4-Wheel Caster Steer w/Kingpinless Swivels, Hybrid Low Push/Pull Force	✓	✓	✓	✓
Precision Sealed Wheel Bearings	✓	✓	✓	✓
Heavy Duty Floor Lock w/ Replaceable Friction Pad	✓	✓	✓	✓
<u>Optional:</u> "Operator No-Bend" Heavy-Duty Auto-Hitch and Self Stowing, Reinforced Towbar, Replaceable	✓	✓	✓	✓
Simple Replaceable Hook and Latch, Towbar and Hitch	✓	✓	✓	✓
4-bend Removable Handle	✓	✓	✓	✓
(4) Deck Load Stop Bars w/Red Hand Grips (internal sockets in deck)	✓	✓		
<u>Optional:</u> Load Stop Brackets on Corners, Rounded for Safety (field installed)			✓	✓
Deck Height (floor to top of deck)	10 5/8"	10 5/8"	10 5/8"	10 5/8"
Cart Usable Deck Area	48" x 96"	42" x 72"	49.5" x 49.5"	37.5" x 37.5"
Cart Tare Weight	290 lbs.	211 lbs.	175 lbs.	125 lbs.
Deck Load Capacity	1200 lbs.	1200 lbs.	1200 lbs.	1200 lbs.
Rated Load Capacity (to meet ergo guidelines w/standard wheels)	1200 lbs.	1200 lbs.	1200 lbs.	1200 lbs.

Application photos, technical specifications and CAD drawings can be found on the web site at www.KtecInc.com